

Linnæus University



New approaches for conservation of threatened elm trees through holobiont concept

Liina Jürisoo, PhD

Linnaeus University, Sweden

**postdoctoral fellow at the department of Forestry and
Wood Technology**

The overall goal of this project

to expand the current knowledge base for development of sustainable conservation strategies for elms (*Ulmus* spp.) under the threat of DED;

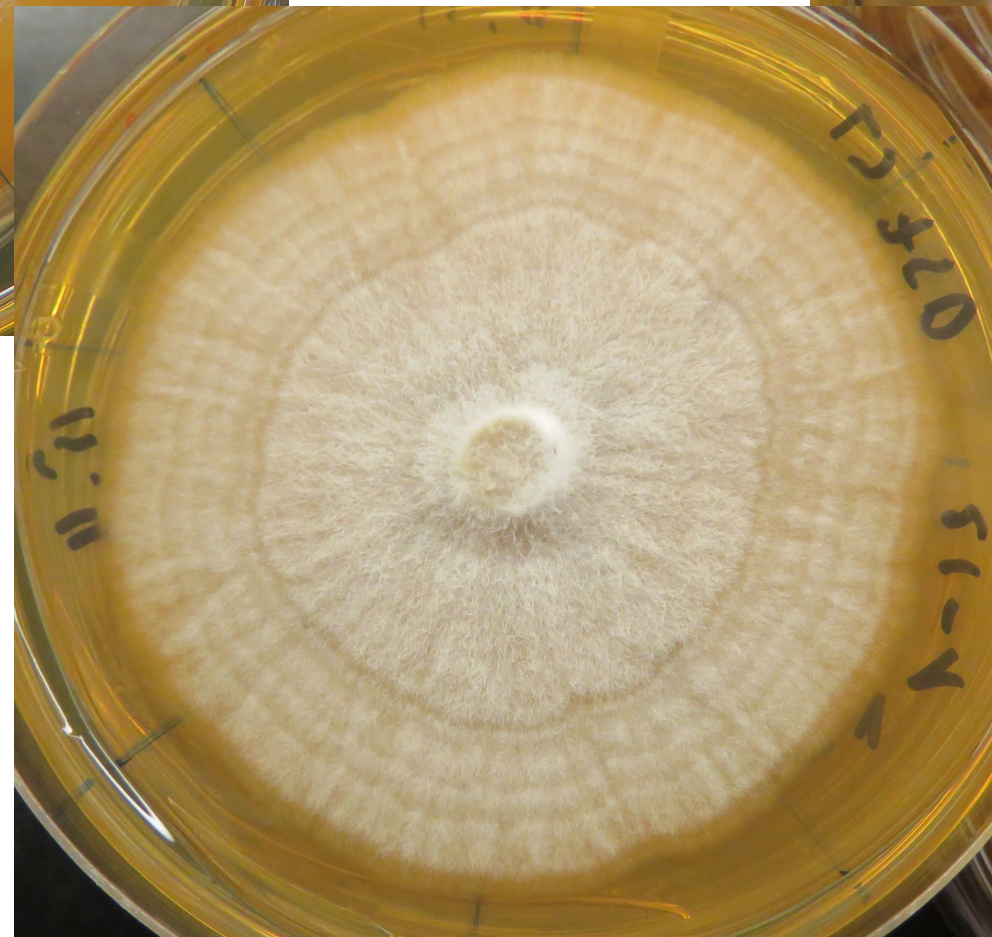
Specific questions

1. May certain fungal communities suppress the activity of the DED pathogens?
2. Does the vaccination treatment influence the associated biodiversity in elms?
3. What is the population structure of the DED-pathogens in Northern Europe



- 960 plates
- 3 repetitions
- 2 different temperatures





Inoculation tests on apples

Necrosis rates



Cooperation

